

YOU CAN GET HELP

Interpersonal violence happens to people of all races, cultures, incomes, and education levels. It can happen on a first date, or when you are deeply in love. It can happen whether you are young or old, and in heterosexual or same-sex relationships. Interpersonal violence is always wrong, and you can get help. Interpersonal violence includes:

Domestic violence, also known as intimate partner violence (IPV). This is a pattern of coercive, controlling behavior that can include physical abuse, emotional or psychological abuse, sexual abuse, or financial abuse (using money and financial tools to exert control) perpetrated by a spouse, former spouse, live-in partner, former live-in partner or the other parent of the child in common.

Dating violence, which occurs when one person purposely hurts or scares someone they are dating. Dating violence includes physical, emotional and sexual abuse.

Sexual violence, which is any type of sexual activity that a person does not agree to with express consent. Sexual violence can be verbal, visual, or physical. It is perpetrated in many ways including but not limited to: rape, intimate contact without consent such as child molestation, sex with an intoxicated person, groping or unwanted sexual touching, stalking, verbal coercion, harassment, or forcing a person to perform sexual acts such as oral sex or penetrating the perpetrator's body. Sexual violence may be committed by acquaintances, friends, family members, or strangers.

Stalking, or a pattern of behavior that makes you feel afraid, nervous, harassed, or in danger. It is when someone repeatedly contacts you, follows you, sends you things, talks to you when you don't want them to, or threatens you. You can be stalked by someone you know casually, a stranger, a past or current friend, a boyfriend or girlfriend, or a current or former partner or spouse.

Domestic Violence services are funded, in whole or in part, from federal and state funds provided by the Cabinet for Health and Family services through a contract with KCADV

How to Get a Protective Order

A Protective Order is a court order, signed by a judge, designed to prevent further acts of domestic violence, dating violence, sexual assault, or stalking.

Why get a protective order?

A Judge can order the respondent to have no contact with you, your children, or others who might need protection; stay away from your home, school, workplace or other places you may likely be; stop abusing or threatening you; and/or leave a shared home. If you have children in common, the court may give you temporary custody and set up a visitation schedule, or order child support.

Who can file for a protective order?

Family members (including spouses, former spouses, parents, children, grandparents, grandchildren), couples who have lived together or couples who have a child in common can file for a **Domestic Violence Order**.

People who are in or have been in a dating relationship, people who have been sexually assaulted and people who have been stalked can file for an **Interpersonal Protective Order**.

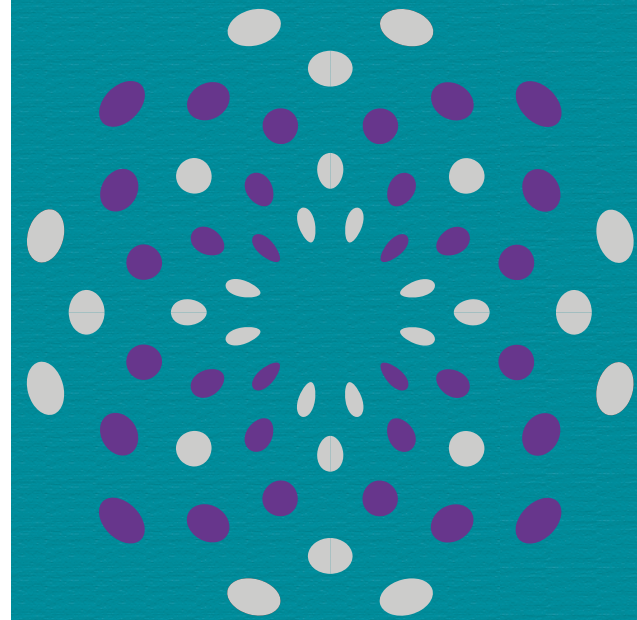
How do I get a protective order?

Contact the Circuit Clerk's office – either in the county where you usually live, or the county to which you've fled in order to escape the abuse.

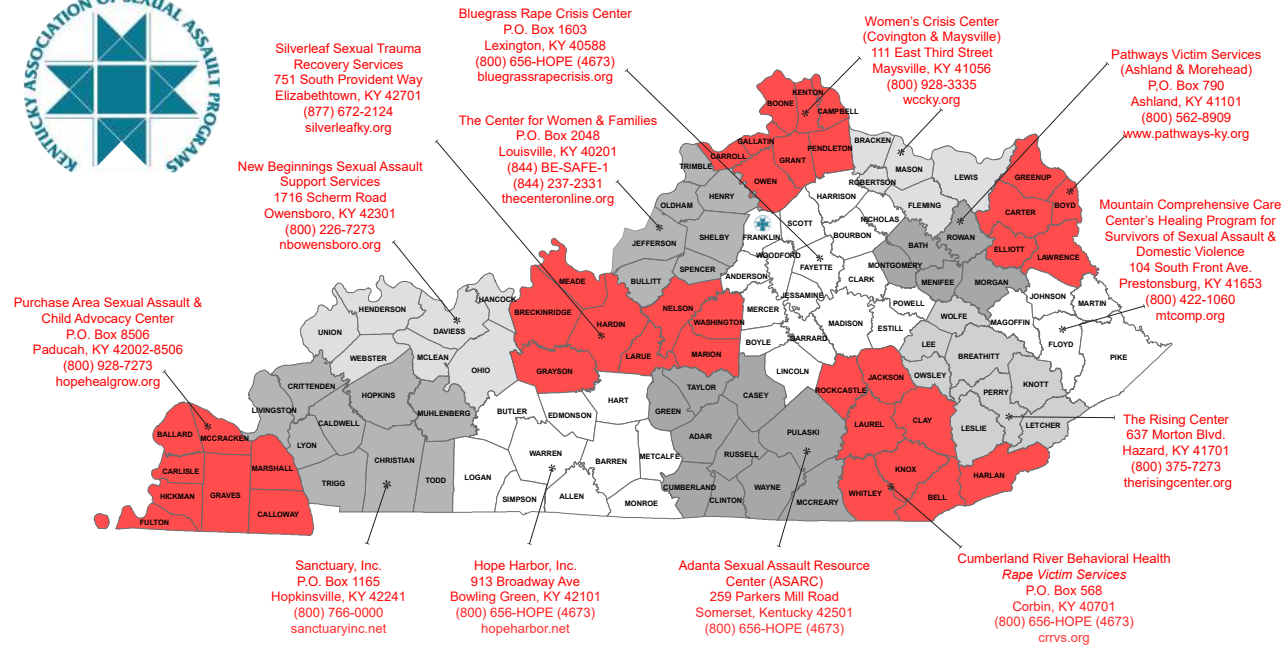
After business hours, or if you have any questions or concerns, contact your local police or domestic violence program to find out what you have to do. See map (inside brochure) for how to contact your domestic violence program or rape crisis center. Protective orders are available 24 hours a day, every day!

THERE ARE NO FEES OR COSTS TO YOU FOR ASKING FOR A PROTECTIVE ORDER.

Help is HERE



Domestic Violence
National Hotline
1 (800) 799 7233 (SAFE)



KENTUCKY ASSOCIATION OF SEXUAL ASSAULT PROGRAMS
P.O. Box 4028 | Frankfort, KY 40604 | (502) 226 - 2704 | www.kasap.org

Sexual Assault Crisis Centers

Perpetrators sexually assault nearly 1 in 2 women and 1 in 5 men in Kentucky. LGBTQ and minorities report an even higher prevalence of sexual violence. Centers throughout Kentucky offer support services for individuals who experience sexual violence in the following ways:

- Accompany individual to a sexual assault forensic exam and/or other medical appointments
- Accompany individual to hearings, trials, and meetings related to sexual violence, including with law enforcement and to court: may include civil, protection order, criminal, and/or school cases
- Counseling and/or therapy: services vary and may include options for individuals as well as groups
- 24/7 crisis line: Call 1-800-656-HOPE (4673) to be connected to a center
- Walk in services available at some locations
- Information and referrals for other needs

Services are available to both children & adults regardless of when the sexual assault occurred, be it recently or years ago. Support services are also available to friends and family members.

All sexual assault services are available free of charge.

Domestic Violence Programs

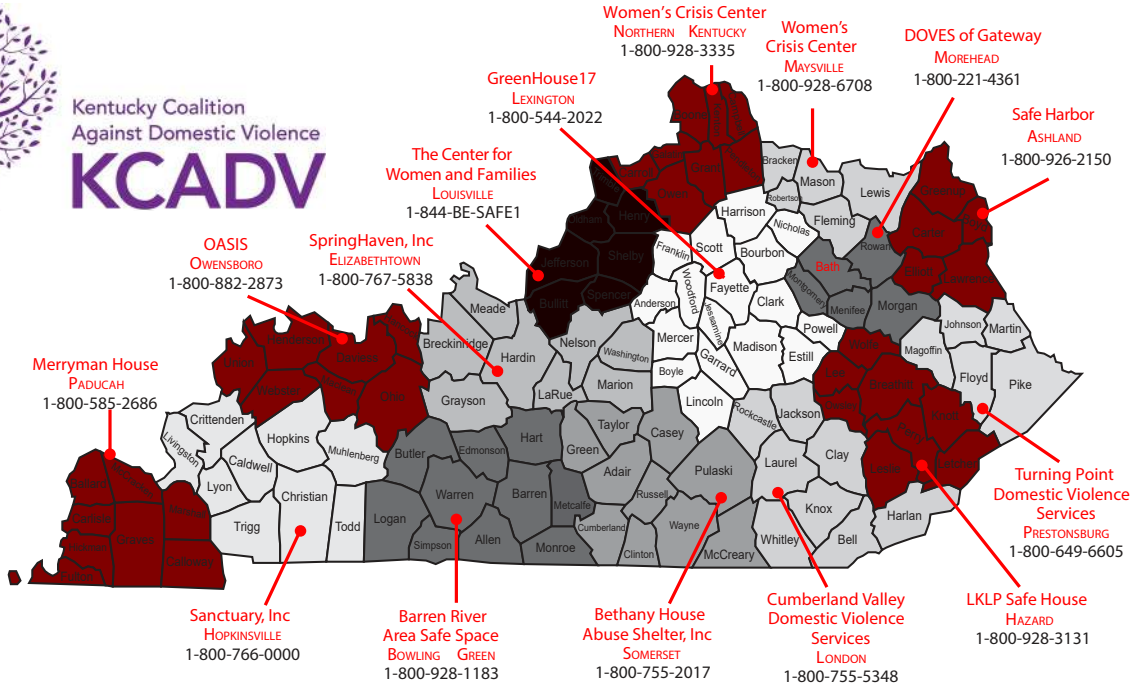
One in 4 women and 1 in 7 men have been victims of severe physical violence by an intimate partner in their lifetime. Survivors come from all walks of life. They may be of any sex, class, background, race, religion, or sexual orientation. In addition to providing a safe, secure environment for victims/survivors and their children, Kentucky's domestic violence programs offer a variety of supportive services to both shelter residents and non-residential participants. Program services include:

- 24-hour crisis line
- Legal/court advocacy
- Case management and safety planning
- Support groups and individual counseling
- Children's groups and parenting classes
- Housing assistance, financial education, budgeting, and help in reaching economic independence
- Access to Individual Development Accounts, free tax preparation, and job search assistance
- Drug and alcohol services or referrals to substance abuse programs

All domestic violence crisis services are available free of charge.



Kentucky Coalition Against Domestic Violence
KCADV



Kentucky Coalition Against Domestic Violence
111 Darby Shire Circle | Frankfort, KY 40601
tel: (502) 209 5382 | fax: (502) 226 5382 | www.kcadv.org